

Michigan's MTSS Technical Assistance Center (MiMTSS TAC)

formerly Michigan's Integrated Behavior and Learning Support Initiative (MIBLSI)

Module 4: Developing EI Fluency

Tier 1 School-wide Positive Behavioral Interventions and Supports (SWPBIS)

2020-2021



Group Expectations

Be Responsible

- Attend to the “Come back together” signal
- Active participation...Please ask questions

Be Respectful

- Please allow others to listen
 - Please turn off cell phones
 - Please limit sidebar conversations
- Share “air time”
- Please refrain from email and Internet browsing

Be Safe

- Take care of your own needs

Team Roles

- **Facilitator:** lead discussions and activities to keep the team moving forward
- **Recorder:** keep written documentation of key discussion points, decisions, and next steps
- **Time Keeper:** keep track of time and bring the team back together

Purpose

This module provides District Implementation Teams with a common understanding of the core components of Tier 1 School-wide PBIS.

Intended Outcomes

- Identify core components of School-wide PBIS
- Outline the purpose of an Initiative Inventory
- Plan for completing the District Initiative Inventory to support buy-in and readiness for installation of Tier 1 SWPBIS

Agenda

1.0 Tier 1 School-wide PBIS

2.0 Inventory of Behavior Initiatives and Innovations

Connection to the MDE MTSS Practice Profile

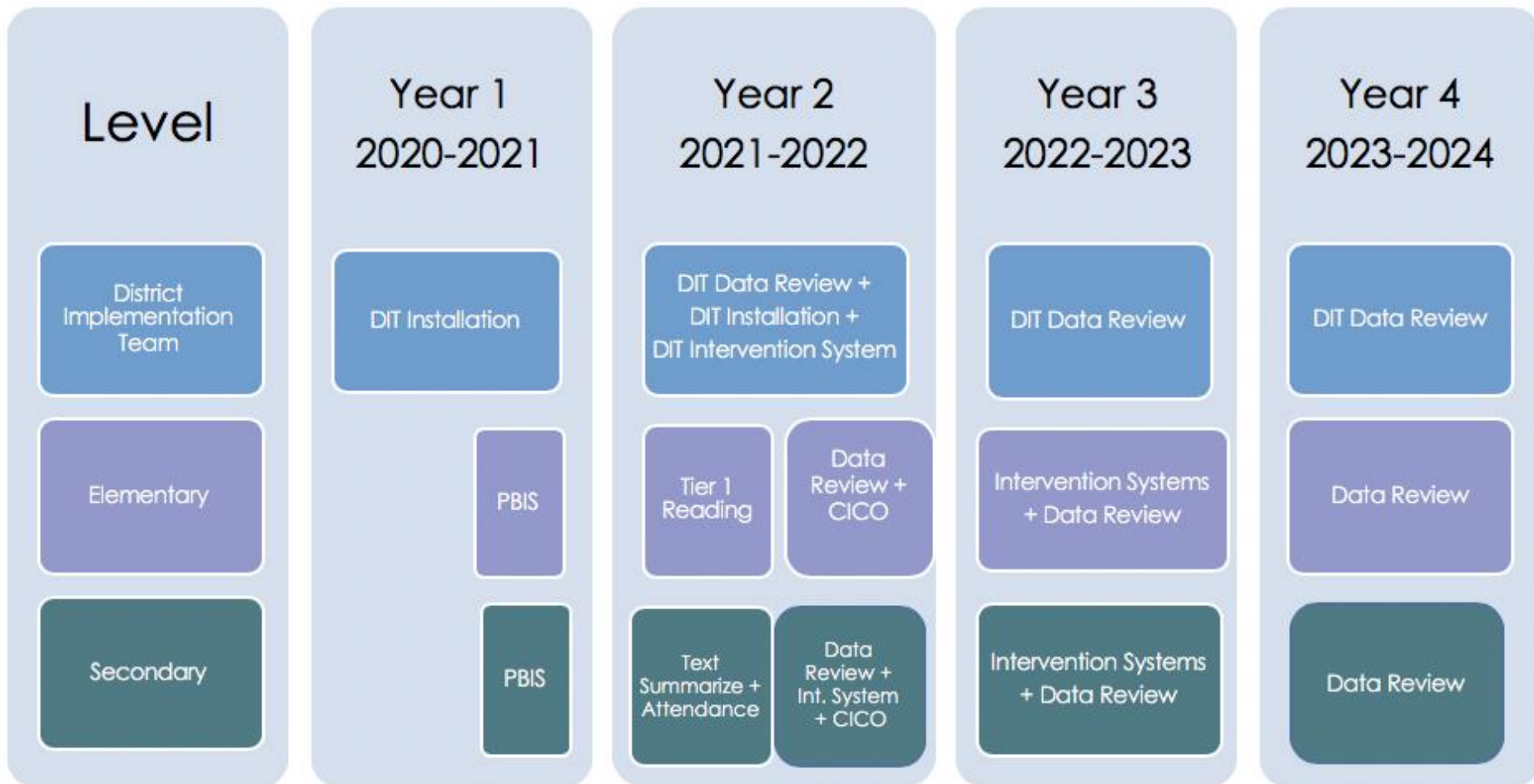
- Essential Component: Tiered Delivery System
 - Definition: A responsive framework that provides instruction, interventions, and supports intended to meet the needs of the whole child...Tiers are intended to be layered with intensification of supports as matched to learner need. (MDE MTSS Team, 2018)
- When your schools install and implement School-wide PBIS, they are learning how to install a “Tiered Delivery System” for behavior

Use of Module 4 Learning

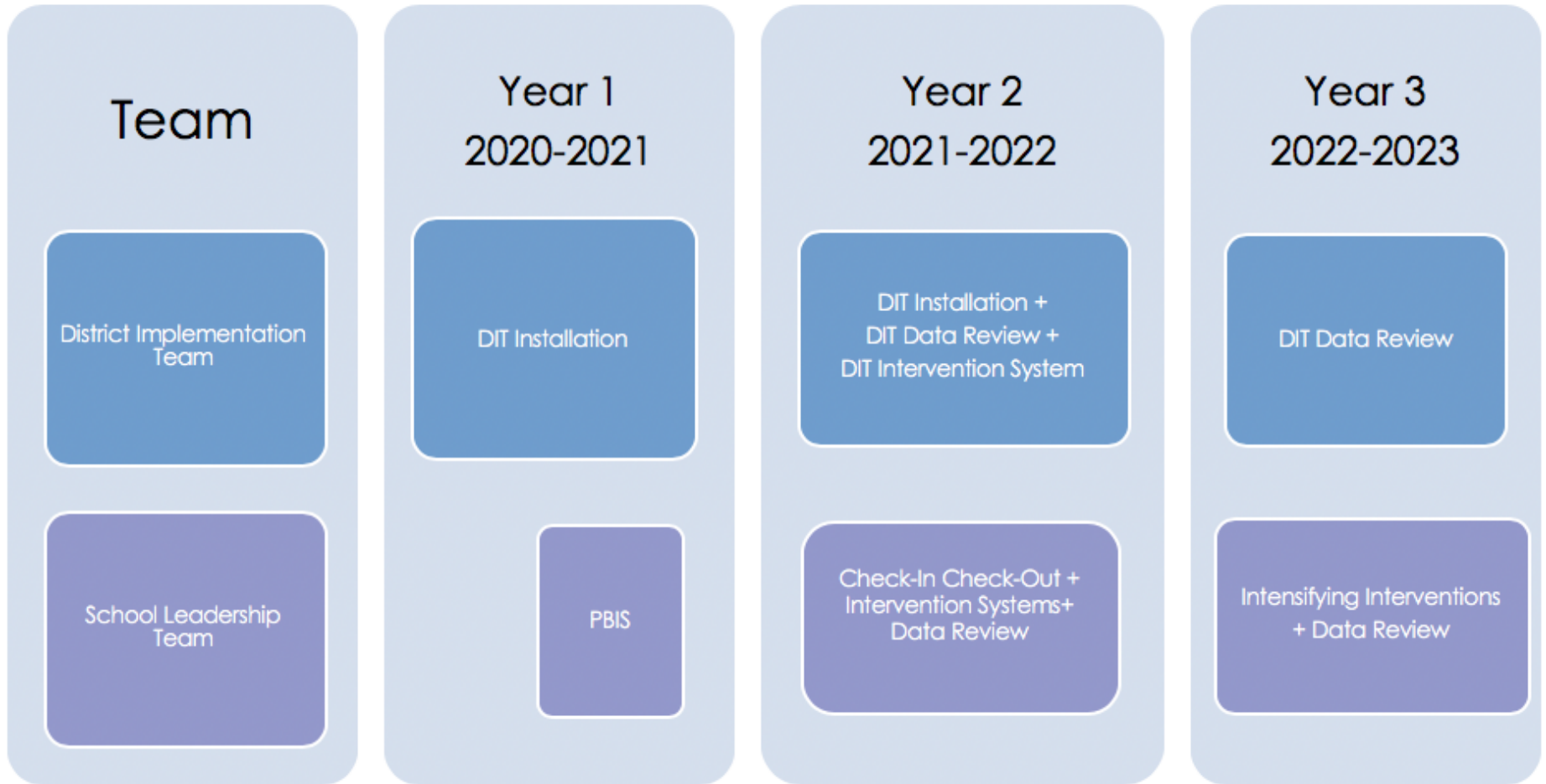
- You will immediately use the information in this module as you begin to prepare your schools for installing Tier 1 School-wide PBIS beginning in January

1.0 Tier 1 School-wide PBIS

Recall: Integrated Scope and Sequence



Recall: PPSC Scope and Sequence

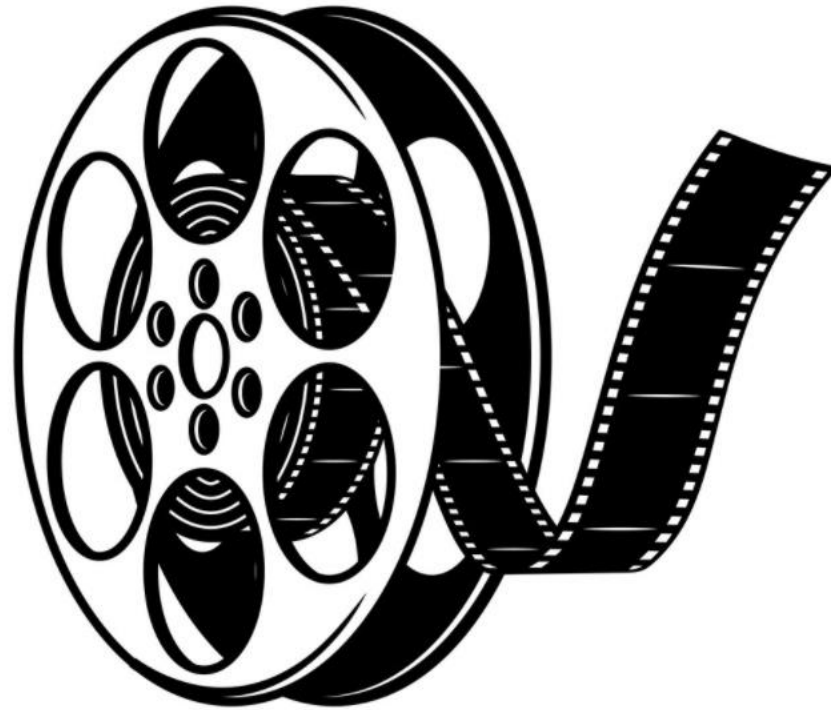


Where Do School Leadership Teams Start?

School-wide Positive Behavioral Interventions and Supports (PBIS) is an evidence-based three-tiered framework for improving and integrating all of the data, systems, and practices affecting student outcomes every day. It is a way to support everyone – especially students with disabilities – to create the kinds of schools where all students are successful.

(National PBIS Center, 2019; Horner, Sugai, & Anderson, 2010)

Big Ideas of PBIS: Overview



School-wide PBIS Tiered Fidelity Inventory

School-level fidelity tool that helps us answer the question, “Are we doing what we said we would do?” regarding implementation of School-wide PBIS



(Algozzine, et al., 2014)

Activity 1.1

- **Divide your team into three groups**
 - **Group 1: Tier 1 Teams (1.1 to 1.2) and Tier 1 Evaluation (1.12 to 1.14)**
 - **Group 2: Tier 1 Implementation (1.3 to 1.6)**
 - **Group 3: Tier 1 Implementation (1.7 to 1.11)**
- **Link the items reviewed by your group to the Big Ideas of School-wide PBIS to create a summary to share with the rest of your team**
- **Each group will take turns sharing their summary**

School Readiness

- The first effective innovation schools will install is Tier 1 SWPBIS
- Prior to installation, school leadership teams and school coaches will need to be recruited and selected
- Modules 5, 6, and 7 will provide the DIT with guidance and recommendations for the recruitment and selection of school coaches and teams

Activity 1.2

- **Access “MTSS Talking Points” from Module 2.0 in your binder**
- **Add any additional information that you would want to share with staff given what you have learned about Tier 1 SWPBIS**
- **We will be discussing more about communication to staff about Tier 1 SWPBIS during Module 6.0**
- **Be prepared to share out**

2.0 Inventory of Behavior Initiatives and Innovations

Why Conduct an Inventory?

- This year, your District Implementation Team will be focusing on:
 - Developing school readiness to install the components of an MTSS framework
 - Developing and using a process to align effective innovations (e.g., initiatives, practices, programs, assessments)
 - Developing and potentially using a process to review, select, and de-select effective innovations
- Inventorying the district's current initiatives and innovations and collecting critical information about them will help your team with the work listed above

Inventory Purpose

- To guide the team in a review of current initiatives and innovations in order to provide a clear understanding of:
 - Existing priorities
 - State and / or federal mandates
 - Resource commitments
- To explore the feasibility and fit of participating in additional initiatives with current work
- Guide decision making to make space for new work and alignment of efforts

Benefits

- An inventory helps to:
 - Develop shared understanding about current priorities
 - Assists the District Implementation Team in systematically thinking through critical variables that will help determine the feasibility of supporting new work and the degree to which the new work aligns with existing priorities
 - Prompts people to keep the importance of obtaining outcomes for efforts at the center of the work (expected outcomes and evidence of outcomes)
 - Provides an archive of initiatives that can be revisited in an on-going way

Inventory Use

- Today, we will generate a list of current initiatives and innovations, focusing first on those intended to address behavior
- During Modules 6, 11, and 12, this list of initiatives and innovations will be used to inform activities and decisions for:
 - School readiness planning
 - Using the alignment process
 - Using the selection and de-selection process

Activity 1.3

- **Your team will work with your Implementation Specialist and Coordinator to identify the behavior initiatives and innovations your district is prioritizing their time, attention, and resources to implement**
- **This information will be used to inform school readiness planning and to complete the District Initiative and Innovation Inventory for Behavior in future modules**

Assignment

- **Access the District Installation Checklist in MiMTSS Data System to review the activities assigned for Module 4**
- **You will be asked to update your progress on a regular basis until all installation activities are completed**