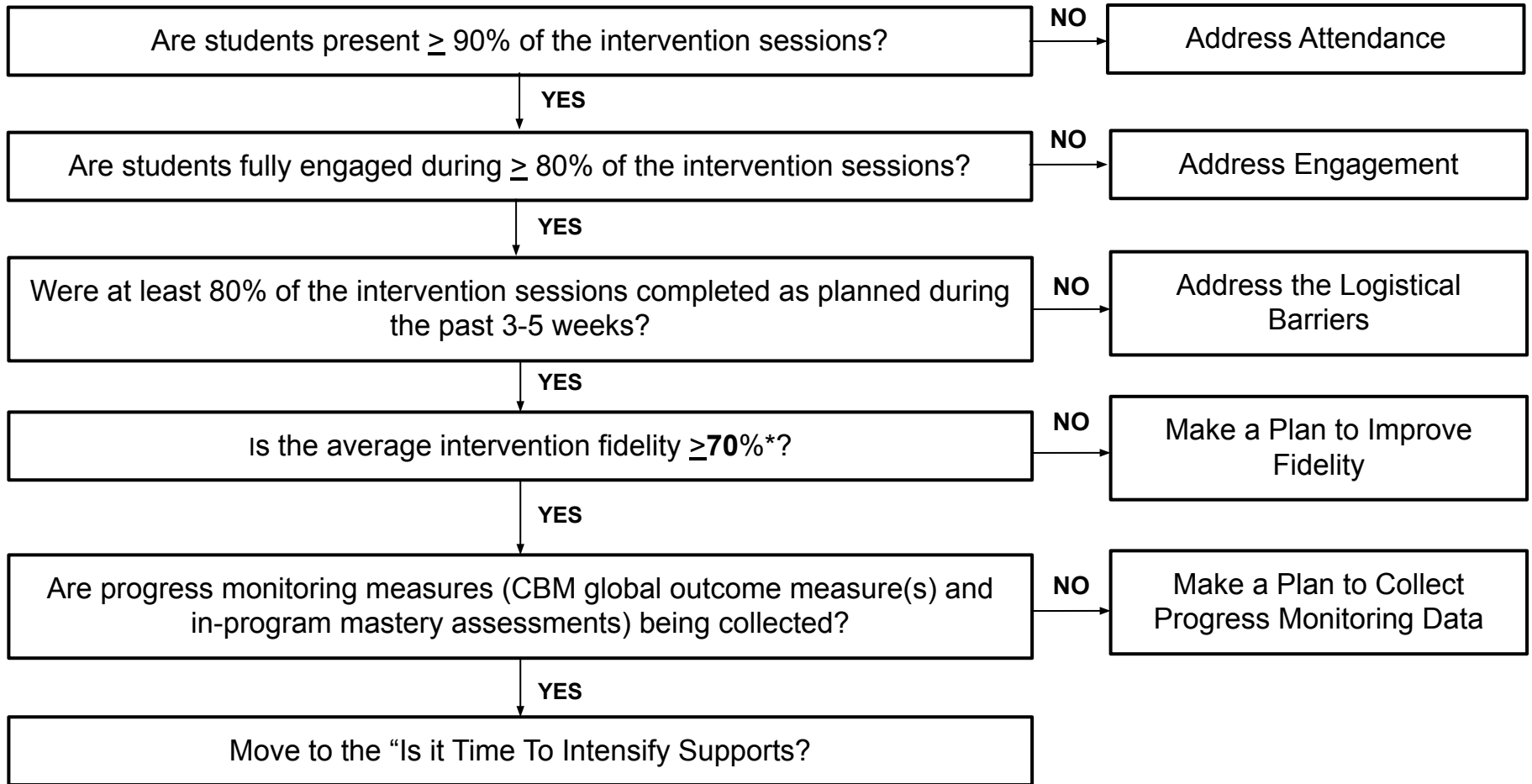


# Flowchart 1: Have Students Received Adequate Instruction? (Hypothesis 1)



### Next Steps:

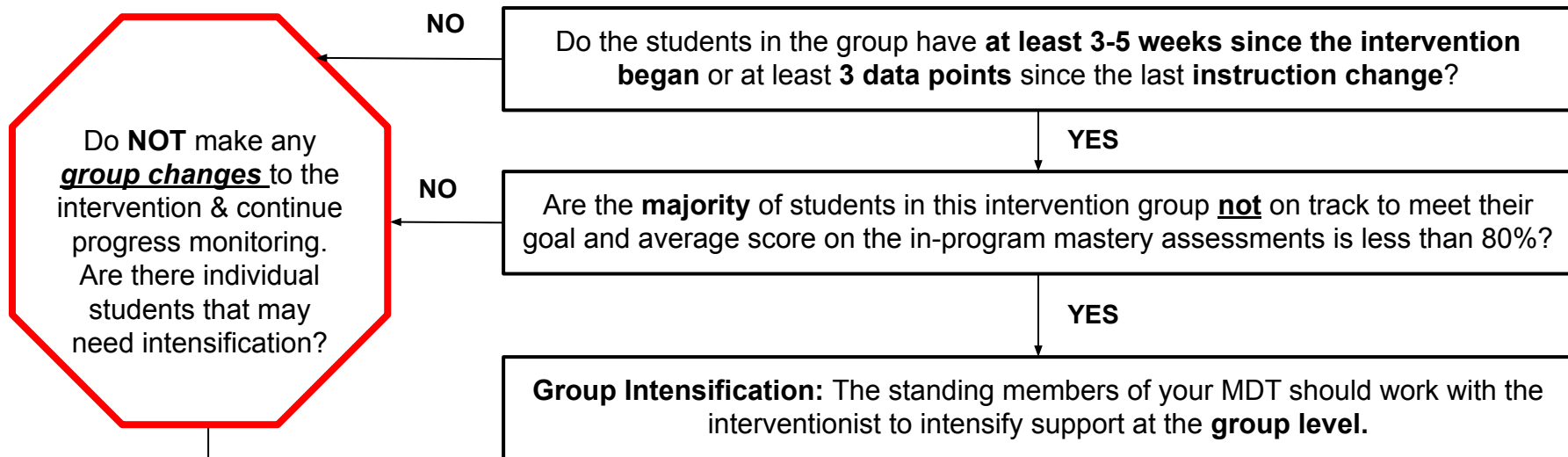
Addressing attendance, engagement, logistical barriers, lack of fidelity, or the need to collect in-program mastery assessments still warrant **adding a phase line** into the data system for the intervention group.

Design a plan to address the logistical barriers, fidelity challenges, and/or the need to collect in-program progress monitoring (mastery) assessments. Stay focused on what is within your control.

### Note:

\*Fidelity threshold should be established by the MDT based on intervention program recommendations. If nothing exists, use 70% average as a place to get started.

## Flowchart 2. Is it Time to Intensify Supports?(Hypothesis 2)



Does the student have at least 5 data points since intervention began or at least 3 data points since the last instructional change?

YES

Are there individual students whose **last three data points** are all below the aim line for the priority measure and their in-program mastery assessment is less than 80%?

YES

Has the student been present for **≥ 90%** of intervention sessions?

YES

**Individual Intensification:** MDT collects additional diagnostic data (if needed) & schedules a meeting with the student's classroom teacher, family member(s), & interventionist to **plan individual intensification**.

NO

NO

NO

